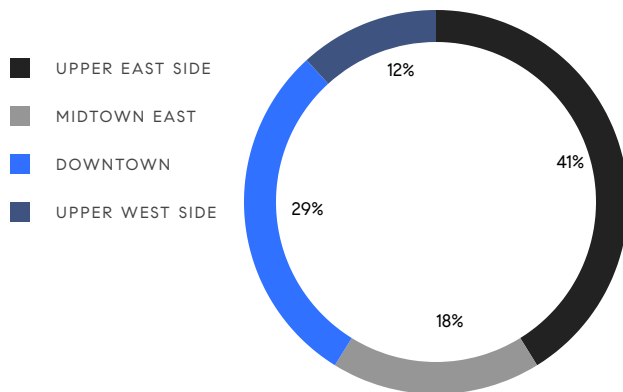


MANHATTAN WEEKLY LUXURY REPORT



20 WEST 53RD STREET, UNIT 42A

RESIDENTIAL CONTRACTS
\$5 MILLION AND UP



17
CONTRACTS SIGNED
THIS WEEK

\$216,185,000
TOTAL CONTRACT VOLUME

The Manhattan luxury real estate market, defined as all properties priced \$5M and above, saw 17 contracts signed this week, made up of 12 condos, 3 co-ops, and 2 houses. The previous week saw 17 deals. For more information or data, please reach out to a Compass agent.

\$12,716,765

AVERAGE ASKING PRICE

\$7,495,000

MEDIAN ASKING PRICE

\$2,886

AVERAGE PPSF

6%

AVERAGE DISCOUNT

\$216,185,000

TOTAL VOLUME

270

AVERAGE DAYS ON MARKET

Unit 12 at 960 5th Avenue on the Upper East Side entered contract this week, with a last asking price of \$60,000,000. This full-floor co-op offers 8 beds and 7 full baths. It features high ceilings, cinematic Central Park views, multiple wood-burning fireplaces, staff rooms and offices, wide hallways, a large kitchen, and much more. The building provides a 24-hour doorman, multiple porters, maid and laundry service, a fully-staffed dining room and in-house chef, a rooftop exercise room, a roof terrace, storage, and many other amenities.

Also signed this week was Unit 12A at 20 East 76th Street on the Upper East Side, with a last asking price of \$28,000,000. This condo unit spans 5,416 square feet with 6 beds and 5 full baths. It features a large primary bedroom with dual walk-in closets and en-suite bath, pocket doors, a dining room and adjacent great room, a large kitchen with center island and pantry, two offices, and much more. The building provides a spa with sauna and steam room, a courtyard, a roof deck, a full-time doorman and concierge, and many other amenities.

12

CONDO DEAL(S)

3

CO-OP DEAL(S)

2

TOWNHOUSE DEAL(S)

\$10,434,584

AVERAGE ASKING PRICE

\$25,991,667

AVERAGE ASKING PRICE

\$6,497,500

AVERAGE ASKING PRICE

\$7,685,000

MEDIAN ASKING PRICE

\$12,000,000

MEDIAN ASKING PRICE

\$6,497,500

MEDIAN ASKING PRICE

\$3,205

AVERAGE PPSF

\$1,388

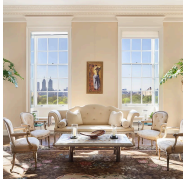
AVERAGE PPSF

3,243

AVERAGE SQFT

4,873

AVERAGE SQFT



960 5TH AVE #12

Upper East Side

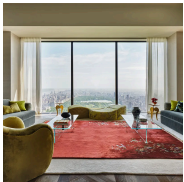
TYPE	COOP	STATUS	CONTRACT	ASK	\$60,000,000	INITIAL	\$70,000,000
SQFT	N/A	PPSF	N/A	BEDS	8	BATHS	7
FEES	N/A	DOM	514				



20 EAST 76TH ST #12A

Upper East Side

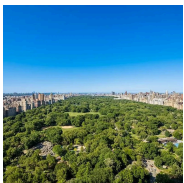
TYPE	CONDO	STATUS	CONTRACT	ASK	\$28,000,000	INITIAL	\$28,000,000
SQFT	5,416	PPSF	\$5,170	BEDS	6	BATHS	5
FEES	\$22,598	DOM	1				



111 WEST 57TH ST #66

Midtown

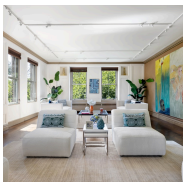
TYPE	CONDO	STATUS	CONTRACT	ASK	\$19,750,000	INITIAL	\$25,500,000
SQFT	3,873	PPSF	\$5,100	BEDS	3	BATHS	3
FEES	\$19,936	DOM	506				



160 CENTRAL PARK SOUTH #PH4001

Midtown

TYPE	CONDO	STATUS	CONTRACT	ASK	\$15,000,000	INITIAL	\$15,000,000
SQFT	3,250	PPSF	\$4,616	BEDS	3	BATHS	3
FEES	\$18,729	DOM	466				



1060 5TH AVE #4B

Upper East Side

TYPE	COOP	STATUS	CONTRACT	ASK	\$12,000,000	INITIAL	\$12,000,000
SQFT	5,850	PPSF	\$2,052	BEDS	6	BATHS	5
FEES	N/A	DOM	13				

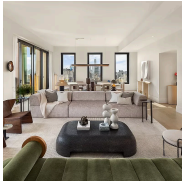


20 EAST 76TH ST #11B

Upper East Side

TYPE	CONDO	STATUS	CONTRACT	ASK	\$9,000,000	INITIAL	\$9,000,000
SQFT	2,101	PPSF	\$4,284	BEDS	2	BATHS	2.5
FEES	\$8,723	DOM	2				

Compass is a licensed real estate broker and abides by Equal Housing Opportunity laws. All material presented herein is intended for informational purposes only. Information is compiled from sources deemed reliable but is subject to errors, omissions, changes in price, condition, sale, or withdrawal without notice. No statement is made as to the accuracy of any description. All measurements and square footages are approximate. This is not intended to solicit property already listed. Nothing herein shall be construed as legal, accounting or other professional advice outside the realm of real estate brokerage.



39 WEST 23RD ST #PH21

Flatiron District

TYPE	CONDO	STATUS	CONTRACT	ASK	\$8,950,000	INITIAL	\$9,250,000
SQFT	3,194	PPSF	\$2,803	BEDS	4	BATHS	4
FEES	\$12,467	DOM	97				



200 EAST 66TH ST #A1406

Upper East Side

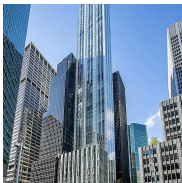
TYPE	CONDO	STATUS	CONTRACT	ASK	\$7,875,000	INITIAL	\$7,875,000
SQFT	4,600	PPSF	\$1,712	BEDS	7	BATHS	5.5
FEES	\$11,379	DOM	8				



1 CENTRAL PARK WEST #23D

Upper West Side

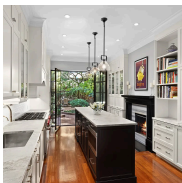
TYPE	CONDO	STATUS	CONTRACT	ASK	\$7,495,000	INITIAL	\$7,495,000
SQFT	2,255	PPSF	\$3,324	BEDS	3	BATHS	4.5
FEES	\$11,158	DOM	245				



100 EAST 53RD ST #7C

Midtown

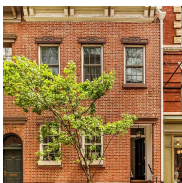
TYPE	CONDO	STATUS	CONTRACT	ASK	\$6,850,000	INITIAL	\$6,850,000
SQFT	4,607	PPSF	\$1,487	BEDS	3	BATHS	3.5
FEES	\$18,404	DOM	100				



239 EAST 78TH ST

Upper East Side

TYPE	TOWNHOUSE	STATUS	CONTRACT	ASK	\$6,500,000	INITIAL	\$7,995,000
SQFT	3,912	PPSF	\$1,662	BEDS	5	BATHS	3
FEES	\$3,475	DOM	553				



64 BEDFORD ST

West Village

TYPE	TOWNHOUSE	STATUS	CONTRACT	ASK	\$6,495,000	INITIAL	N/A
SQFT	5,833	PPSF	\$1,114	BEDS	3	BATHS	3.5
FEES	\$2,246	DOM	602				

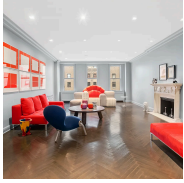
Compass is a licensed real estate broker and abides by Equal Housing Opportunity laws. All material presented herein is intended for informational purposes only. Information is compiled from sources deemed reliable but is subject to errors, omissions, changes in price, condition, sale, or withdrawal without notice. No statement is made as to the accuracy of any description. All measurements and square footages are approximate. This is not intended to solicit property already listed. Nothing herein shall be construed as legal, accounting or other professional advice outside the realm of real estate brokerage.



166 WEST 18TH ST #PH11

Chelsea

TYPE	CONDO	STATUS	CONTRACT	ASK	\$6,250,000	INITIAL	\$9,250,000
SQFT	3,579	PPSF	\$1,747	BEDS	4	BATHS	4.5
FEES	\$12,465	DOM	687				



784 PARK AVE #14B

Upper East Side

TYPE	COOP	STATUS	CONTRACT	ASK	\$5,975,000	INITIAL	\$5,975,000
SQFT	N/A	PPSF	N/A	BEDS	4	BATHS	N/A
FEES	\$8,242	DOM	17				



7 HARRISON ST #2N

Tribeca

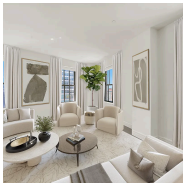
TYPE	CONDO	STATUS	CONTRACT	ASK	\$5,500,000	INITIAL	\$6,000,000
SQFT	2,205	PPSF	\$2,495	BEDS	3	BATHS	3
FEES	\$7,183	DOM	206				



8 WEST 60TH ST #56G

Upper West Side

TYPE	CONDO	STATUS	CONTRACT	ASK	\$5,495,000	INITIAL	\$5,495,000
SQFT	1,595	PPSF	\$3,446	BEDS	2	BATHS	2
FEES	\$6,532	DOM	88				



100 BARCLAY ST #17B

Tribeca

TYPE	CONDO	STATUS	CONTRACT	ASK	\$5,050,000	INITIAL	\$5,050,000
SQFT	2,230	PPSF	\$2,265	BEDS	3	BATHS	3.5
FEES	\$7,630	DOM	469				

Compass is a licensed real estate broker and abides by Equal Housing Opportunity laws. All material presented herein is intended for informational purposes only. Information is compiled from sources deemed reliable but is subject to errors, omissions, changes in price, condition, sale, or withdrawal without notice. No statement is made as to the accuracy of any description. All measurements and square footages are approximate. This is not intended to solicit property already listed. Nothing herein shall be construed as legal, accounting or other professional advice outside the realm of real estate brokerage.